



7/35-37 Jeffrey Street Canterbury NSW

2  **1**  **1** 

SOLD BY GAVIN SANNA

Looking for a spacious 2-bedroom unit with breathtaking views? Look no further than this remarkable top-floor apartment.

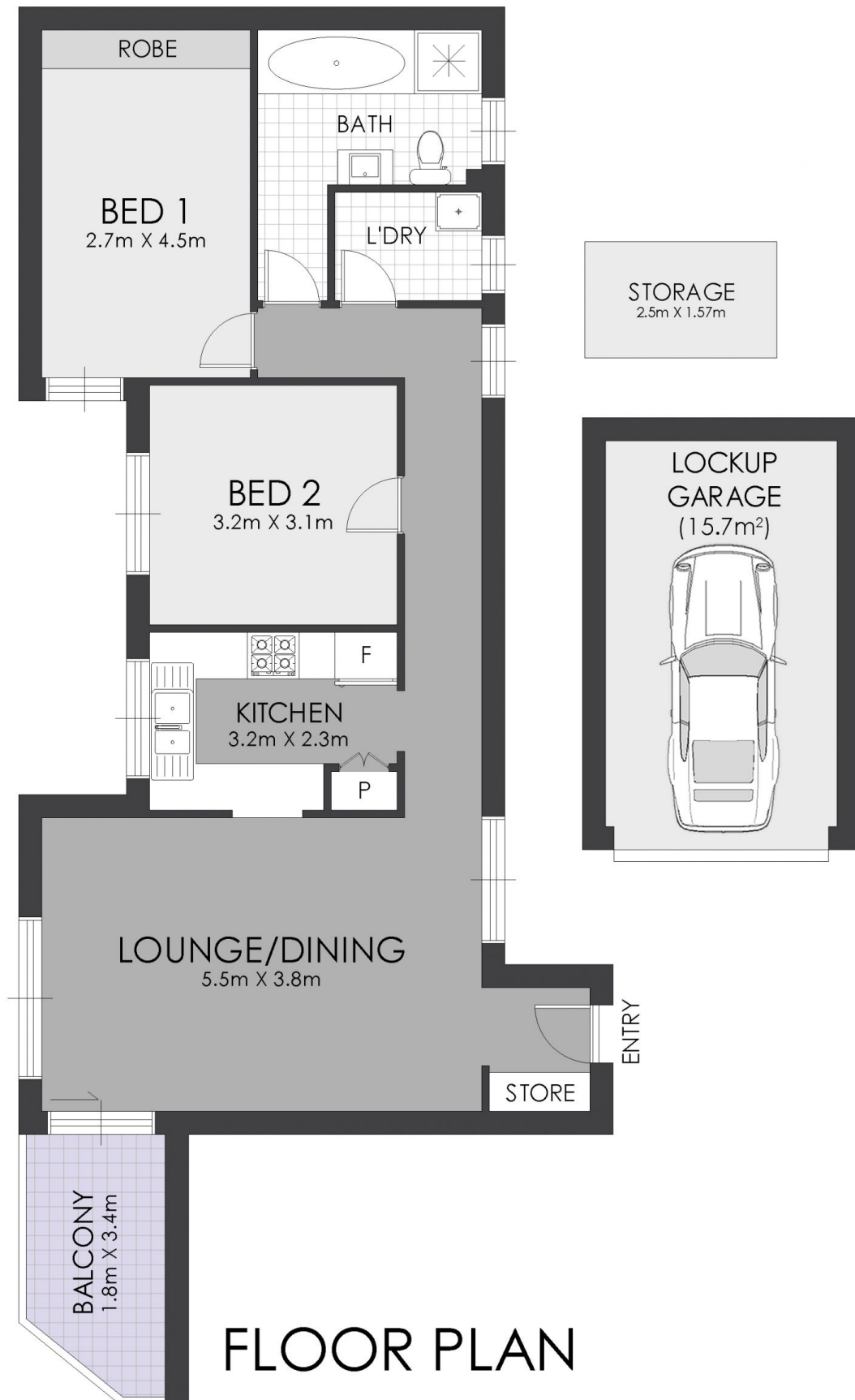
Nestled in a highly sought-after security building at the end of a quiet cul-de-sac, this unit boasts an enviable location with easy access to local amenities and transport links.

Inside, you'll find a light-filled living space with large windows flowing out to balcony capturing spectacular views of the surrounding area and Canterbury Racecourse. The large kitchen comes complete with all the essentials, including stainless steel appliances and ample storage space.

Building Size : 108.5 sqm
View : <https://www.strathfieldpartners.com.au/sale/nsw/canterburybankstown/canterbury/residential/apartment/7543949>



Gavin Sanna
02 9704 0027



STRATHFIELD PARTNERS
REAL ESTATE AGENTS

7/35-37 Jeffrey Street, Canterbury

WARNING: DISCLAIMER This information is not to be relied upon. It is strictly used for marketing and illustration purposes only. All measurements are approximate. Not to scale. No liability accepted. You must rely on your own inquiries and seek advice from your solicitor. Floor plan by cnkplan@cnkplan.com.au / www.cnkplan.com.au