



201/43-45 Loftus Crescent Homebush NSW

3  2  1 

Strata Levy: \$974 p/q Approx.

Rental Return: \$900 per week Approx.

Discover an exclusive world of unrivalled lifestyle Loftus Crescent in Homebush! This designer, luxury apartment offers peaceful suburban living in the heart of Sydney's Inner West. Whether you're looking for some laidback, nature time or to immerse yourself in shopping malls and local cafes, this residence is the perfect address for you with unrivalled access to educational facilities and transportation.

- Generous bedrooms with built-ins and private balcony access
- Smart, modern, luxury bathroom with ensuite to master
- Oversized, light-filled living area leading to large entertainers balcony

Price : Contact Agent

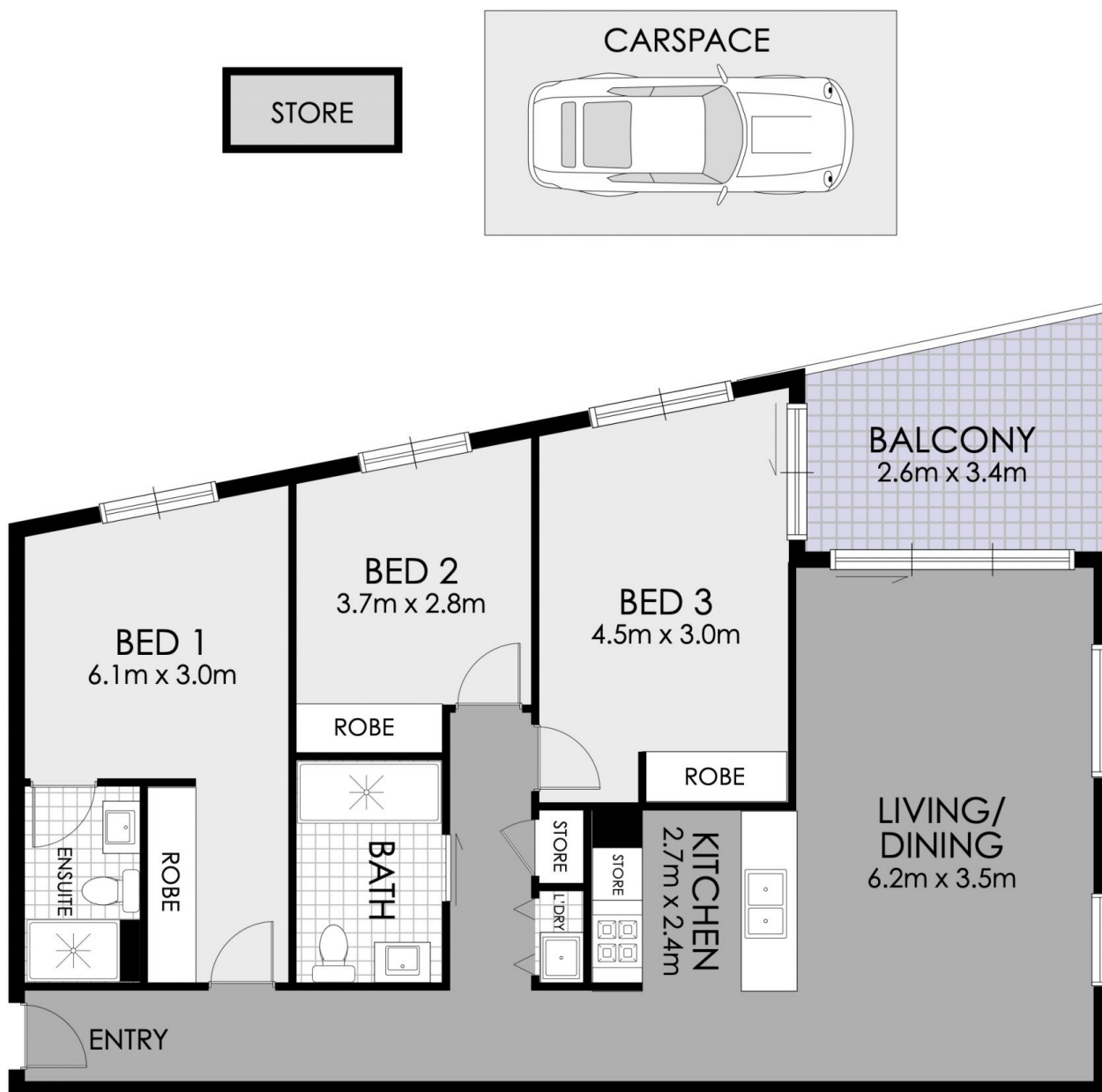
View : <https://www.strathfieldpartners.com.au/sale/nsw/inner-west/homebush/residential/apartment/7820379>



Elie Semrani
9704 0031



Louisa Tsendsuren
02 9763 2277



FLOOR PLAN



201/43-45 Loftus Crescent, Homebush



WARNING: DISCLAIMER This information is not to be relied upon. It is strictly used for marketing and illustration purposes only. All measurements are approximate. Not to scale. No liability accepted. You must rely on your own inquiries and seek advice from your solicitor.