



STRATHFIELD PARTNERS
REAL ESTATE AGENTS



1-6/35 Matthews Street Punchbowl NSW

18 🏠 14 🚗 8 🚗

Introducing a remarkable opportunity to acquire a substantial block of 6 townhouses in the highly sought-after locale of Punchbowl. This unique offering presents both an immediate income stream and significant future development potential.

Price : Contact Agent
Land Size : 983 sqm
View : <https://www.strathfieldpartners.com.au/sale/nsw/canterburybankstown/punchbowl/residential/house/7830178>

Occupying a generous land area of 983sqm with a wide 20.42m frontage, this property has been intelligently designed as a strata scheme comprising of 6 three-bedroom townhouses. Currently generating an impressive rental income of approximately \$5,240 per week, this investment opportunity is too good to pass up.

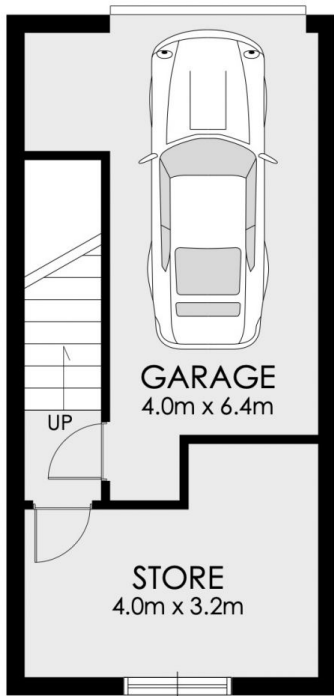


Elie Semrani
9704 0031

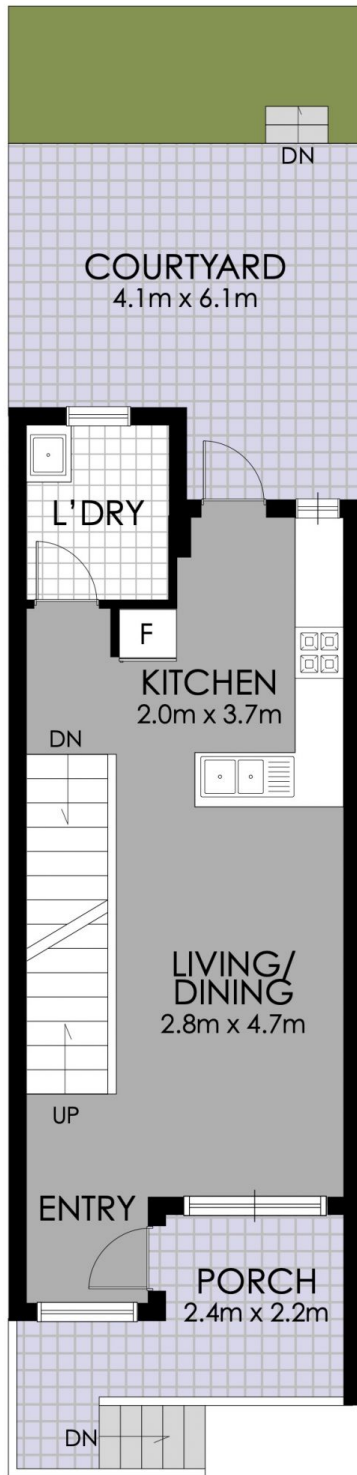


Adrian Jian-Sheng Wu
02 9763 2277

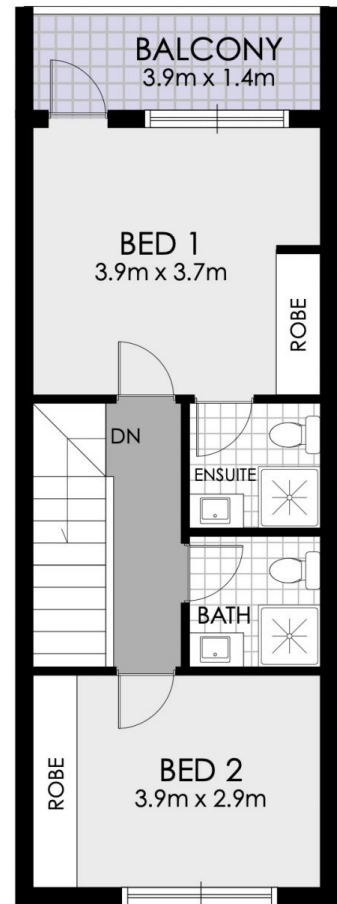
The property's highly desired R4 zoning opens the door for extensive development possibilities (STCA), making it an attractive prospect for developers and savvy investors alike. The potential to capitalise on this rare offering is



BASEMENT



GROUND FLOOR



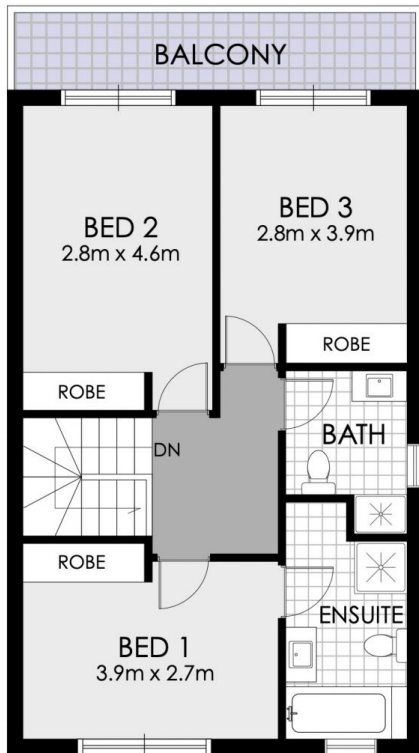
FIRST FLOOR



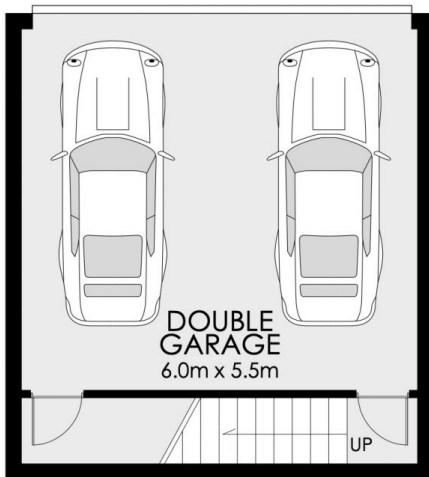
4/35 Matthews Street, Punchbowl



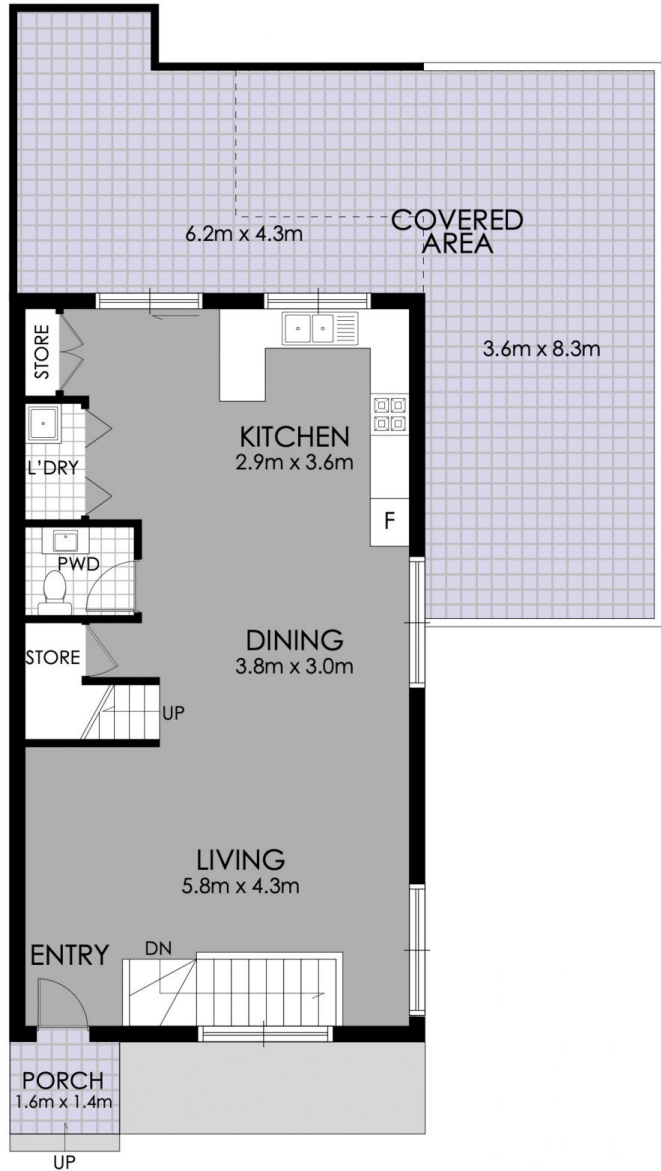
WARNING: DISCLAIMER This information is not to be relied upon. It is strictly used for marketing and illustration purposes only. All measurements are approximate. Not to scale. No liability accepted. You must rely on your own inquiries and seek advice from your solicitor.



FIRST FLOOR



BASEMENT



GROUND FLOOR



1/35 Matthews Street, Punchbowl



WARNING: DISCLAIMER This information is not to be relied upon. It is strictly used for marketing and illustration purposes only. All measurements are approximate. Not to scale. No liability accepted. You must rely on your own inquiries and seek advice from your solicitor.