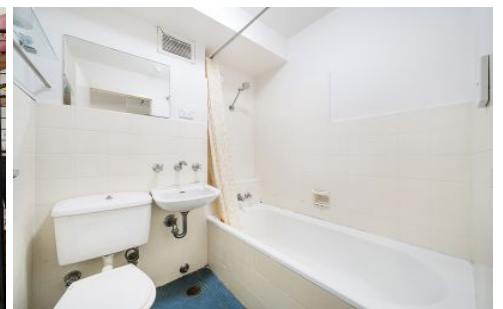
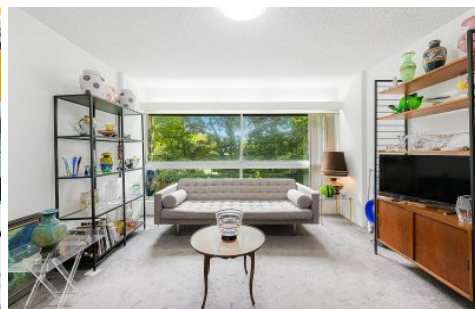




STRATHFIELD PARTNERS
REAL ESTATE AGENTS



13/50-58 Roslyn Garden Rushcutters Bay NSW

1 1

Rental Return: \$500-\$550 per week Approx.

Price : \$ 560,000

View : <https://www.strathfieldpartners.com.au/sale/nsw/eastern-suburbs/rushcutters-bay/residential/studio/7904064>

Experience the extraordinary in this sunlit, one-bedroom studio located in the iconic "Harry Seidler" complex. Tucked away in a picturesque leafy harbour, this apartment offers a serene and private living space. Located in an 'walk-everywhere' village position, this contemporary, low-upkeep apartment is just moments away from Kings Cross/Edgecliff Station.

Key Features:

- ? Well-proportioned studio with separate kitchen and bathroom areas
- ? Bright north-west aspect with views overlooking the sunny pool
- ? Light-filled interiors with carpeted floors
- ? Modern integrated electric kitchen with dishwasher



Elie Semrani
9704 0031



Louisa Tsendsuren
02 9763 2277



FLOOR PLAN



13/50 Roslyn Gardens, Rushcutters Bay



WARNING: DISCLAIMER This information is not to be relied upon. It is strictly used for marketing and illustration purposes only. All measurements are approximate. Not to scale. No liability accepted. You must rely on your own inquiries and seek advice from your solicitor.