



### 37/50 Loftus Crescent Homebush NSW

2  2  1 

Strata Levy: 1,200 p/q Approx  
Rental Return: \$750 p/w Approx

Nestled within the esteemed "Loft" complex, this exquisite top-floor apartment presents a unique blend of luxury, space, and convenience, making it a must-see for discerning buyers. As one of two residences on Level 5, it offers unparalleled privacy and serene views over the leafy suburbs of Inner West's most desirable location, Homebush.

The gourmet gas kitchen is a culinary delight, featuring European appliances, a dishwasher, stone benches, and a separate pantry, perfect for entertaining. High ceilings and new polished timber flooring enhance the sense of space and elegance, complemented by two ultra-modern bathrooms for ultimate comfort. Accommodation comprises

**Price** : \$ 655,000

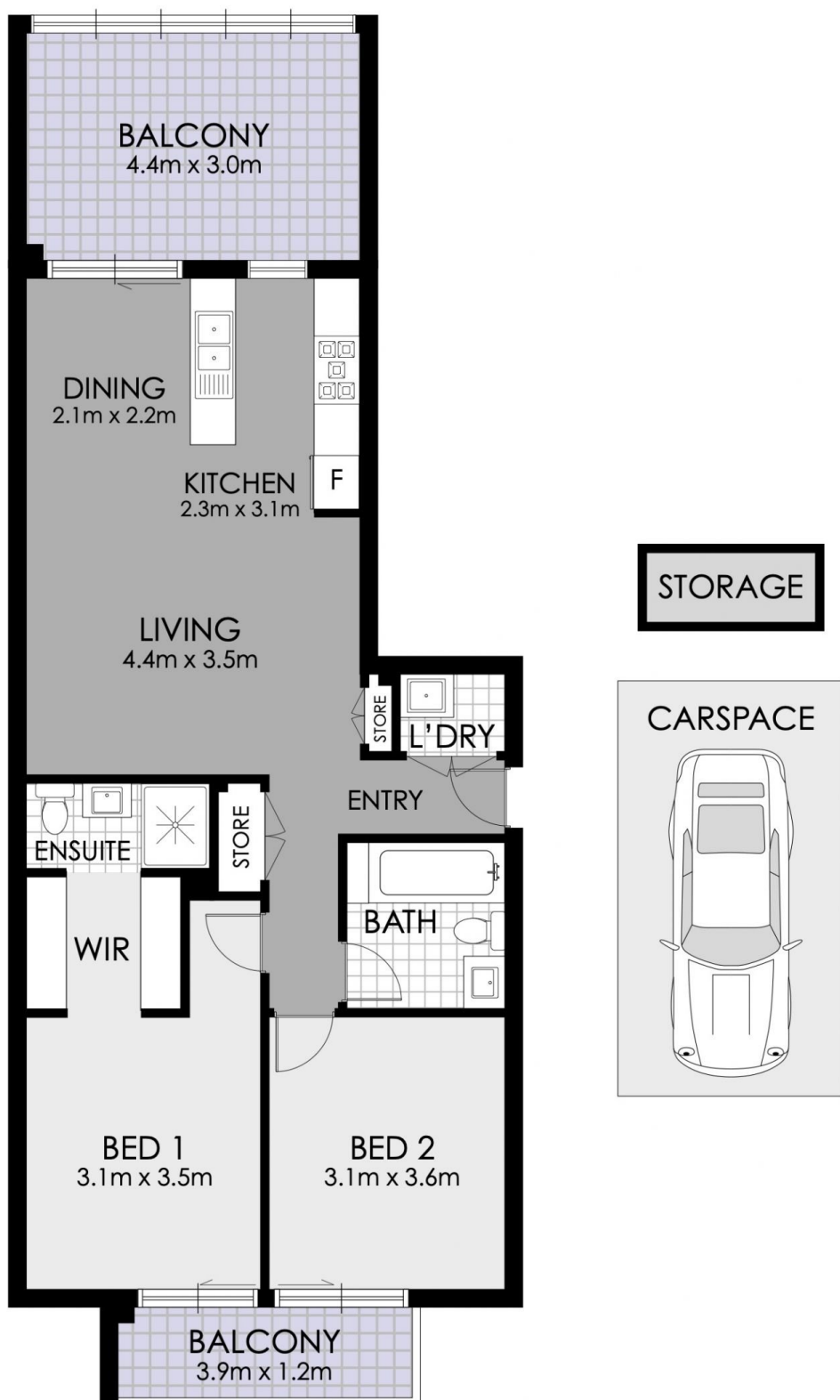
**View** : <https://www.strathfieldpartners.com.au/sale/nsw/inner-west/homebush/residential/apartment/7958475>



**Elie Semrani**  
9704 0031



**Adrian Jian-Sheng Wu**  
02 9763 2277



## 37/50 Loftus Crescent, Homebus

**WARNING: DISCLAIMER** This information is not to be relied upon. It is strictly used for marketing and illustration purposes only. All measurements are approximate. Not to scale. No liability accepted. You must rely on your own inquiries and seek advice from your solicitor.