



**STRATHFIELD PARTNERS**  
REAL ESTATE AGENTS



### 27 Northcote Street Canterbury NSW

6 3 3

Nestled in the vibrant heart of Canterbury, this unique property presents an unparalleled opportunity with two contemporary, full-brick homes on a single title. Situated on a substantial 626m<sup>2</sup> block with a 15.24m frontage, this rare find is perfect for astute investors, growing families, or local developers, offering the potential for duplex development (STCA).

**Price** : AUCTION ON SITE THIS SATURDAY  
**Land Size** : 626 sqm  
**View** : <https://www.strathfieldpartners.com.au/sale/nsw/canterburybankstown/canterbury/residential/house/7967375>

#### First Dwelling

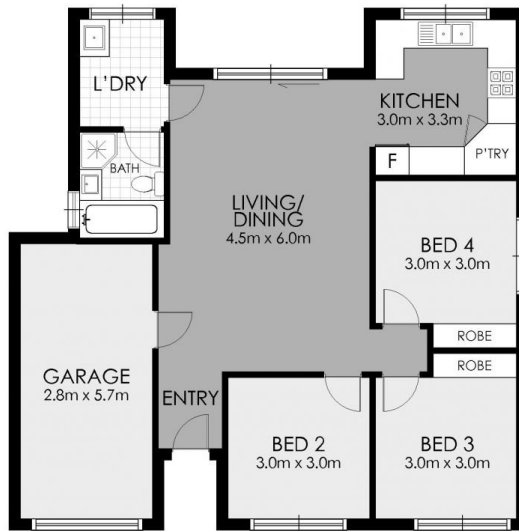
The two-story home at the forefront of the property boasts contemporary family living at its best. Featuring three spacious bedrooms on the upper level, each with built-in wardrobes and near to new timber floors, it combines comfort with convenience, perfect for the growing family. On the ground floor is a generously sized open-plan living and dining area, leading out to a low-maintenance lawn



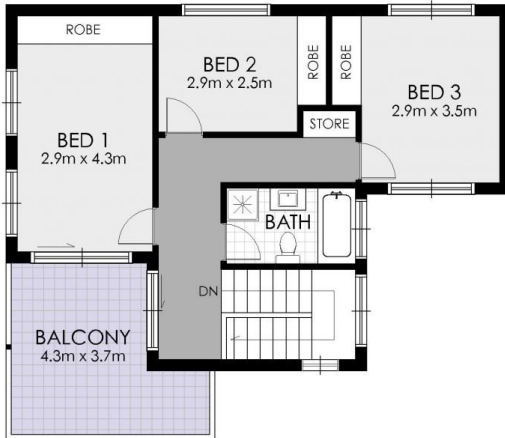
**Elie Semrani**  
9704 0031



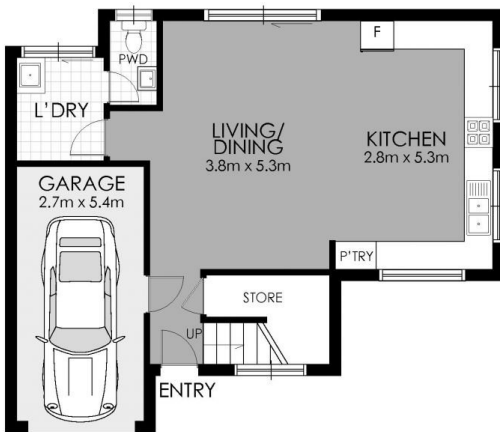
**Adrian Jian-Sheng Wu**  
02 9763 2277



SECOND DWELLING



FIRST FLOOR



GROUND FLOOR



SITE PLAN



## 27 Northcote Street, Canterbury



**WARNING: DISCLAIMER** This information is not to be relied upon. It is strictly used for marketing and illustration purposes only. All measurements are approximate. Not to scale. No liability accepted. You must rely on your own inquiries and seek advice from your solicitor.