



STRATHFIELD PARTNERS
REAL ESTATE AGENTS



310 Blaxland Road Ryde NSW

4 🚗

Looking for a renovator's delight or an investment opportunity with great potential? Look no further than this huge block of land, boasting a total site area of approximately 1200sqm with spectacular views of Parramatta River, Rhodes, Wentworth Point, and Olympic village.

Located in a prime position, this property is perfect for those looking to build their dream home or develop a profitable investment property. With its R2 zoning and height of building of 9.5m, the block offers the potential to develop further (STCA) or take advantage of the CDC plans and build a luxury duplex. Alternatively, renovate and extend the current residence to create your dream home.

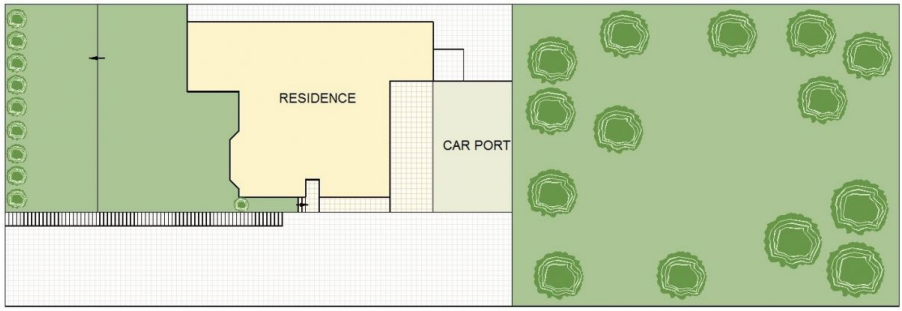
Conveniently located near Top Ryde shopping centre and transport hub, Ryde TAFE, Ryde Hospital, Ferry Services,

Price : Auction - Contact Gavin
Building Size : 1195 sqm
Land Size : 1195 sqm
View : <https://www.strathfieldpartners.com.au/sale/nsw/northern-suburbs/ryde/commercial/development/7967767>

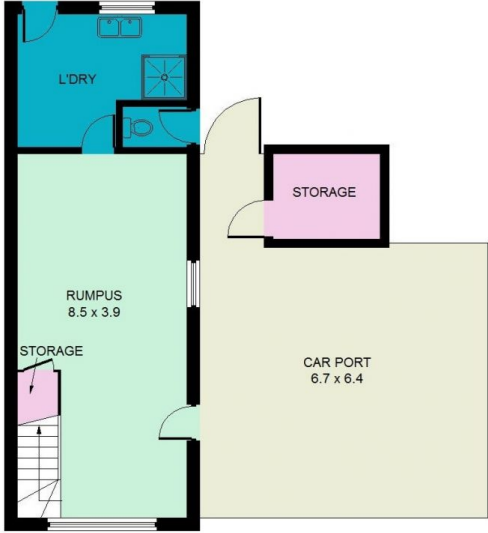


Gavin Sanna
02 9704 0027

<https://www.strathfieldpartners.com.au>



SITE PLAN



LOWER GROUND FLOOR



GROUND FLOOR

310 Blaxland Road, Ryde

This information is not to be relied upon.
It is strictly for marketing & illustration purposes only.
All measurements are approximate. Not to scale.

