



310 Blaxland Road Ryde NSW

4  2  2 

SOLD BY GAVIN SANNA

Looking for a huge block of land, a renovator's delight or an investment opportunity with great potential? Look no further than this huge block of land, boasting a total site area of 1,195sqm with spectacular views of Parramatta River, Rhodes, Wentworth Point, and Olympic village.

Located in a prime position, this property is perfect for those looking to build their dream home or develop a profitable investment property. The block offers the potential to develop further (STCA) or take advantage of the CDC approved plans and build a luxury duplex with magnificent views. Alternatively, renovate and extend the current residence, to create your dream home.

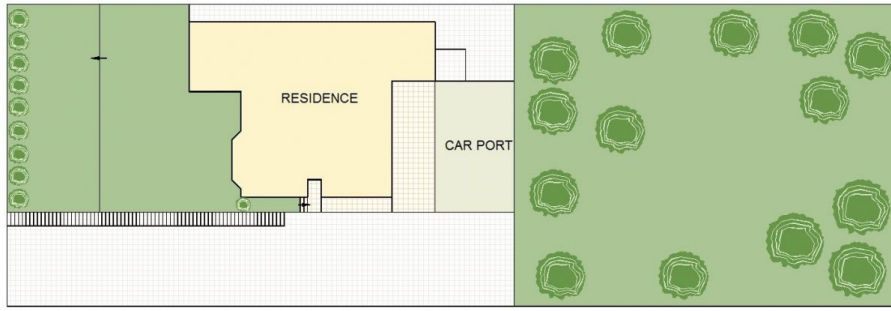
Conveniently located near Top Ryde shopping centre and

Land Size : 1195 sqm

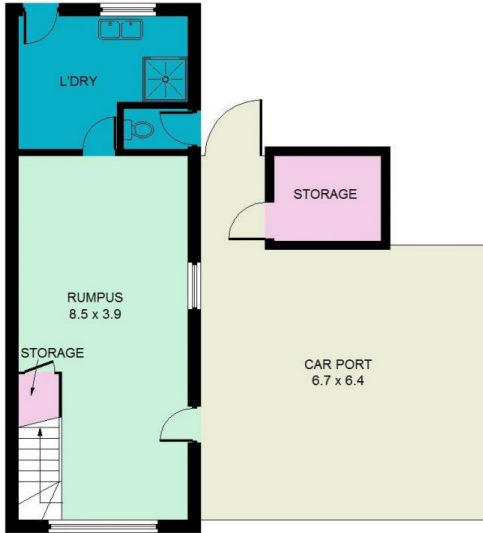
View : <https://www.strathfieldpartners.com.au/sale/nsw/northern-suburbs/ryde/residential/house/7967768>



Gavin Sanna
02 9704 0027



SITE PLAN



LOWER GROUND FLOOR



GROUND FLOOR

310 Blaxland Road, Ryde

This information is not to be relied upon.
It is strictly for marketing & illustration purposes only.
All measurements are approximate. Not to scale.

