



109/29-35 Burlington Road Homebush NSW

1  1  1 

Strata Levy: \$637 p/q Approx.
Rental Return: \$650 p/w Approx.

Nestled on Level 1 of the prestigious 'Vogue' complex in the vibrant heart of Homebush, this exquisite one-bedroom apartment epitomizes modern luxury living, designed for those who appreciate refinement and sophistication.

Upon entering, you are greeted by a spacious open-plan living and dining area, filled with natural light and seamlessly extending to a sun-drenched entertainer's balcony. The generously sized bedroom promises comfort and style, featuring plush carpeting, a built-in wardrobe, and the convenience of direct balcony access. The modern kitchen boasts a Caesar-stone benchtop, mirrored splashback, and high-end SMEG appliances integrated into sleek cabinetry, complemented by a dishwasher and

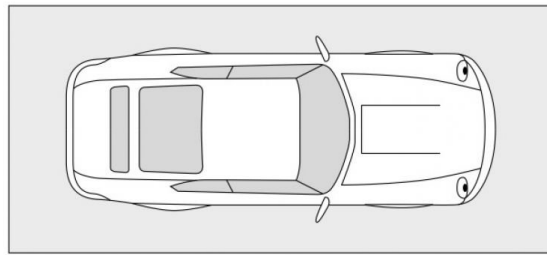
Building Size : 68 sqm
View : <https://www.strathfieldpartners.com.au/sale/nsw/inner-west/homebush/residential/apartment/7968376>



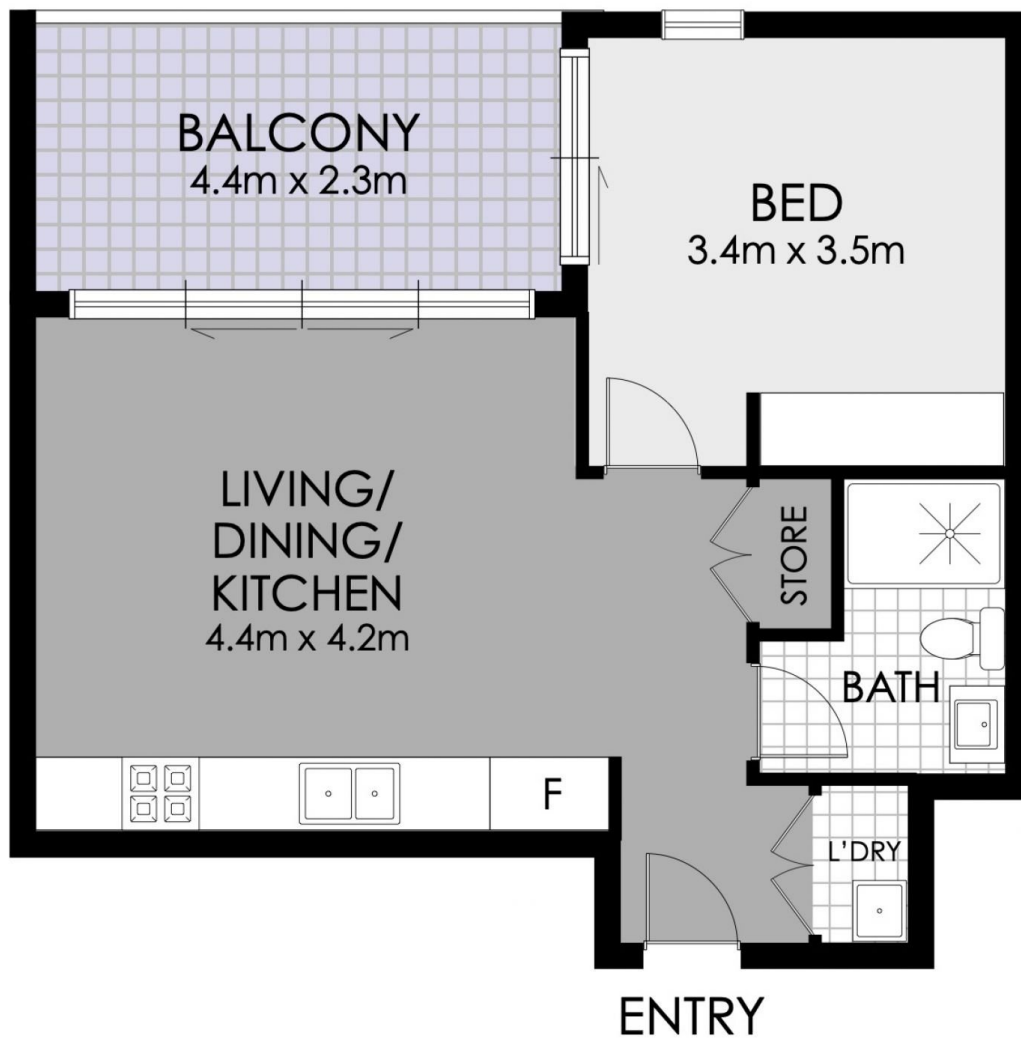
Elie Semrani
9704 0031



Adrian Jian-Sheng Wu
02 9763 2277



CARSPACE



FLOOR PLAN



109/29-35 Burlington Road, Homebush

WARNING: DISCLAIMER This information is not to be relied upon. It is strictly used for marketing and illustration purposes only. All measurements are approximate. Not to scale. No liability accepted. You must rely on your own inquiries and seek advice from your solicitor.