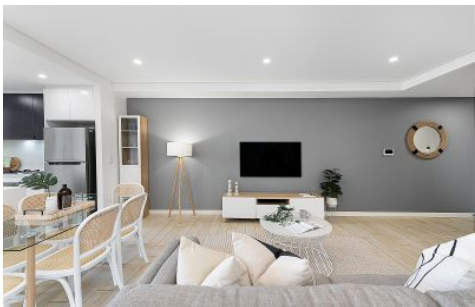




**STRATHFIELD PARTNERS**  
REAL ESTATE AGENTS



### B401/37-39 Loftus Crescent Homebush NSW

2 🛏 2 🚿 2 🚗

Strata Levy: \$860 p/q Approx.

Rental Return: \$800 - \$850 p/w Approx.

Discover unparalleled elegance and sophistication at "Arkenstone", a beacon of architectural excellence nestled in the vibrant heart of Sydney's Inner West. This potential three bedroom luxury apartment, located merely 500m from the heart of Homebush, presents a rare blend of style, comfort, and convenience.

The residence distinguishes itself with an open-plan living area that extends seamlessly onto a spacious north-facing balcony through floor-to-ceiling glass doors, inviting abundant natural light and creating an airy, expansive feel. Inside, the residence boasts stylish features and premium finishes, including modern fittings, ducted air conditioning, and tiled timber flooring, which underscore its

**Price** : \$ 800,000

**View** : <https://www.strathfieldpartners.com.au/sale/nsw/inner-west/homebush/residential/apartment/7968856>



**Elie Semrani**  
9704 0031

<https://www.strathfieldpartners.com.au>