



### 1026/1 Maple Tree Road Westmead NSW

3  2  2 

Indulge in the epitome of luxury living. Impeccably presented and stylish, this apartment boasts exceptional attention to detail and high-quality European finishes throughout.

Enjoy Westmead's serenity yet easy access to Parramatta Park, shopping and the cosmopolitan cuisine of bustling Parramatta.

The brilliantly designed community offers you a home without peer, where you'll be part of a beautifully landscaped sanctuary.

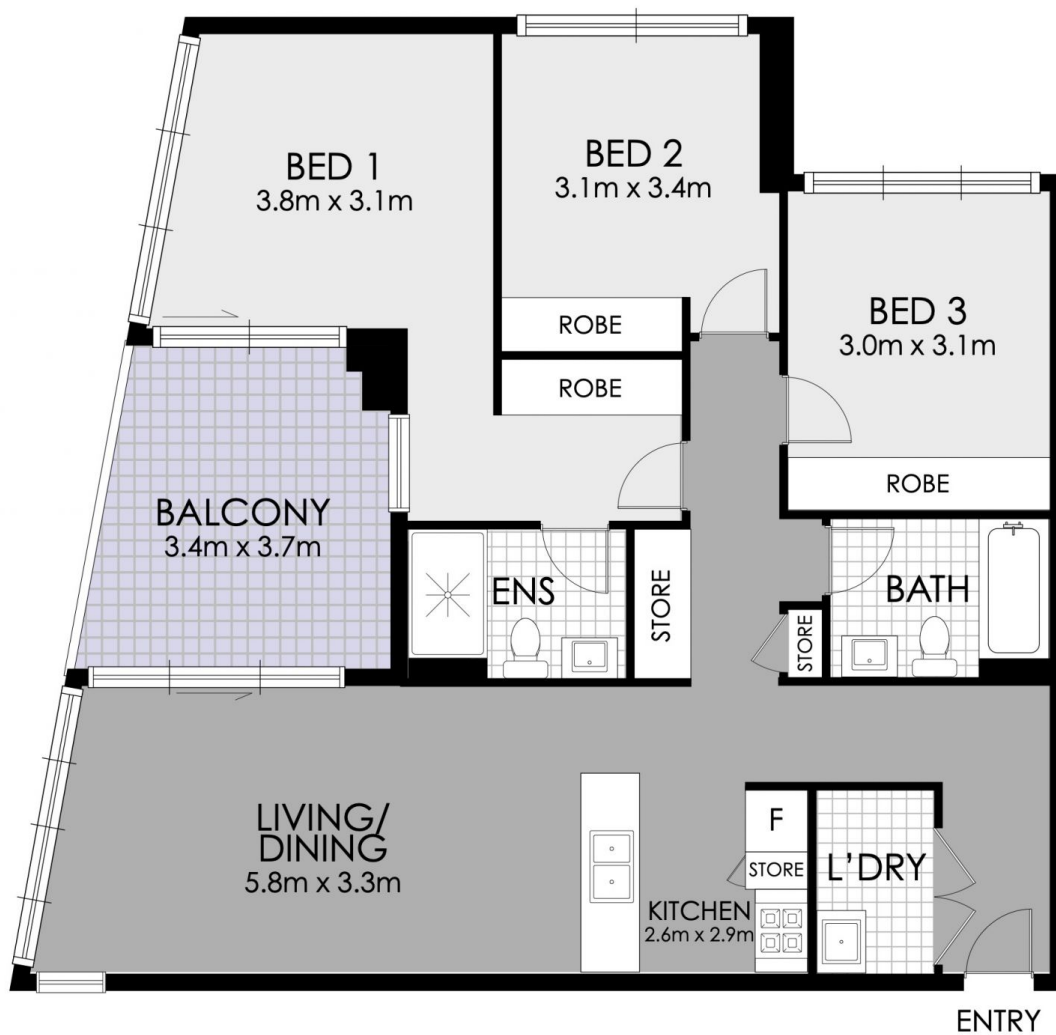
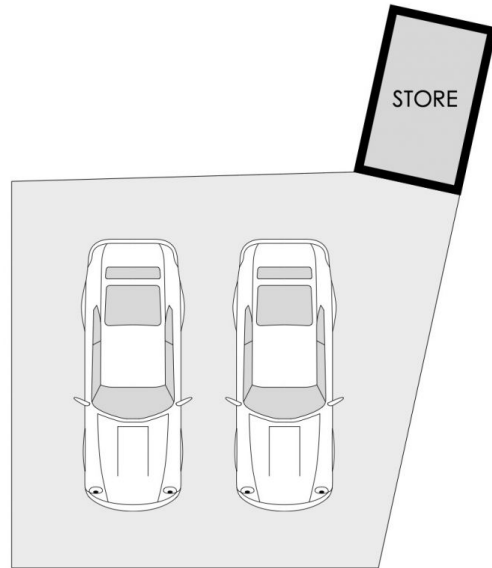
#### Highlights:

- Designer kitchen, gas cooking, stainless steel Smeg appliances

**Price** : \$945,000  
**Building Size** : 150 sqm  
**View** : <https://www.strathfieldpartners.com.au/sale/nsw/parramatta/westmead/residential/apartment/7984394>



**Gavin Sanna**  
02 9704 0027



FLOOR PLAN



**1026/1 Maple Tree Road, Westmead**



**WARNING: DISCLAIMER** This information is not to be relied upon. It is strictly used for marketing and illustration purposes only. All measurements are approximate. Not to scale. No liability accepted. You must rely on your own inquiries and seek advice from your solicitor.