



23/47-53 Hampstead Road Homebush West NSW

1  1  1 

Rental Return: \$550 - \$600 p/w Approx.

Strata: \$800 p/q Approx.

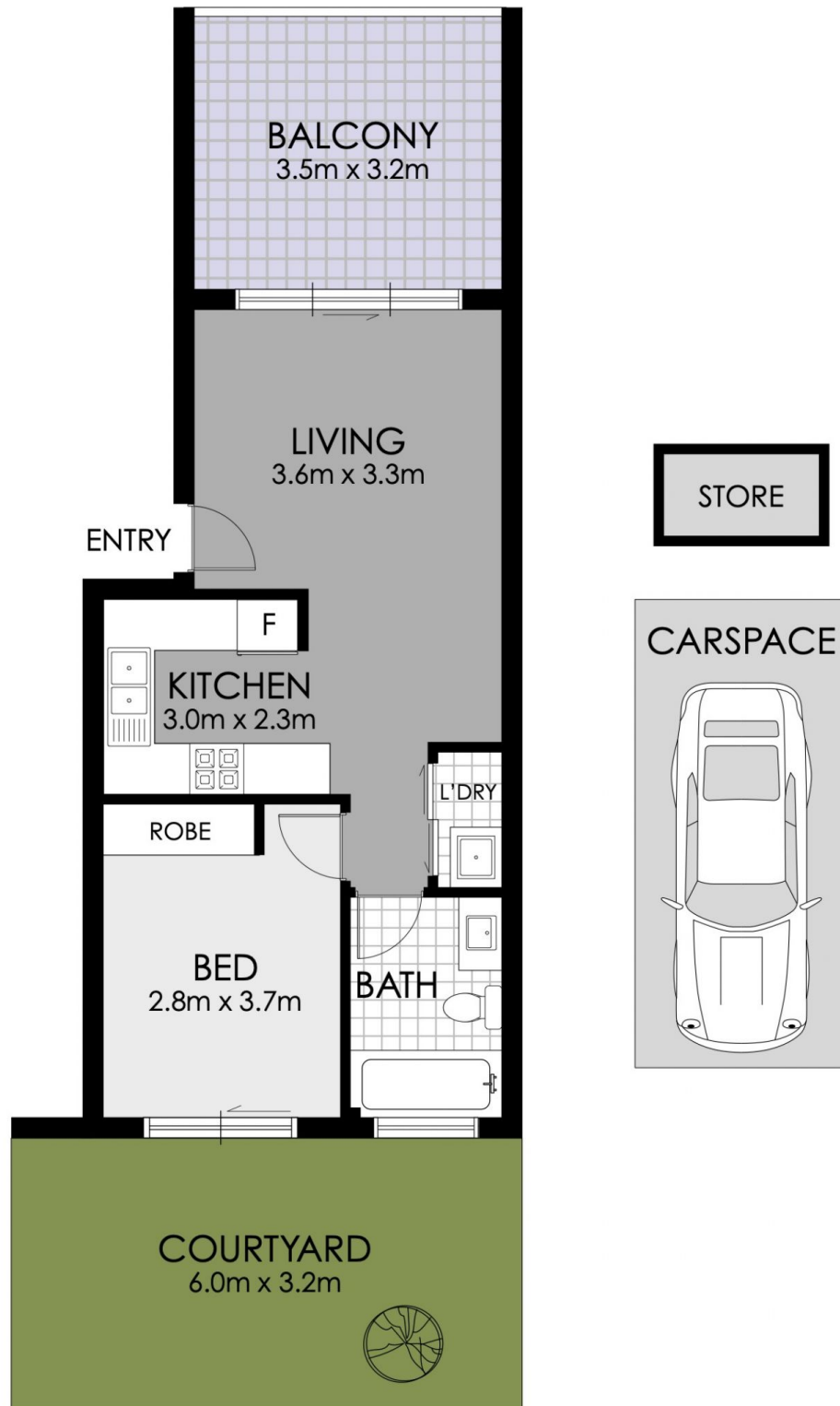
Experience the epitome of comfort and convenience in this spacious north-facing one-bedroom unit situated near Homebush Boys High School, Flemington markets, shops, medical centres, and local schools. Residents can enjoy unparalleled access to a plethora of amenities.

This double brick unit promises a low-maintenance lifestyle, making it ideal for first-time home buyers and investors seeking a strategic entry point into the market. Featuring a combined living and dining area, a built-in robe, a large courtyard for relaxing, and a good-sized north-facing balcony within a contemporary security building, this property offers a serene retreat in the heart of convenience.

View : <https://www.strathfieldpartners.com.au/sale/nsw/inner-west/homebush-west/residential/unit/7984455>



Elie Semrani
9704 0031



FLOOR PLAN



23/47 Hampstead Road, Homebush West



WARNING: DISCLAIMER This information is not to be relied upon. It is strictly used for marketing and illustration purposes only. All measurements are approximate. Not to scale. No liability accepted. You must rely on your own inquiries and seek advice from your solicitor.