



TH33/81-86 Courallie Avenue Homebush West NSW

5 4 2

Luxury full brick residence positioned in an ultra convenient location. Flowing over three levels, this meticulously maintained home offers stylish interiors and light filled spacious living areas. Immerse yourself in the resort style features of the estate which include a swimming pool, sauna, gymnasium, tennis courts, BBQ, Basketball court, kids play area and community hall. This really is an enviable lifestyle located within minutes to the train station, Sydney Olympic Park and Rhodes Shopping Centre.

Features include:

- * Open plan kitchen with Caesarstone bench tops and stainless steel appliances, flowing beautifully to the expansive entertaining courtyard
- * Spacious light filled living area & separate dining room
- * Floorboards throughout
- * Modern bathrooms

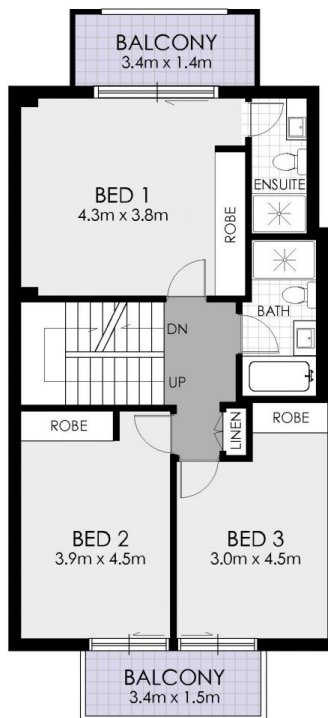
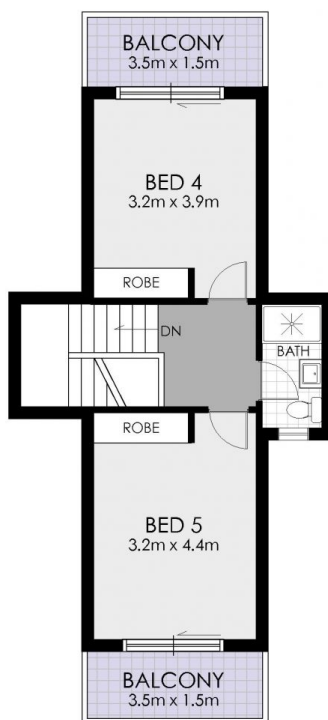
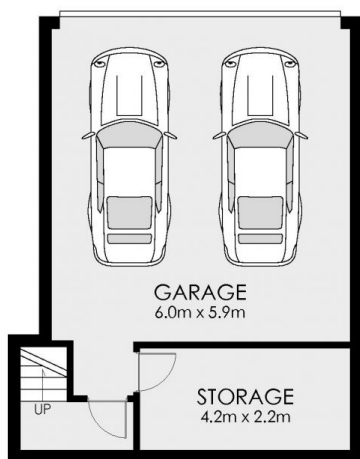
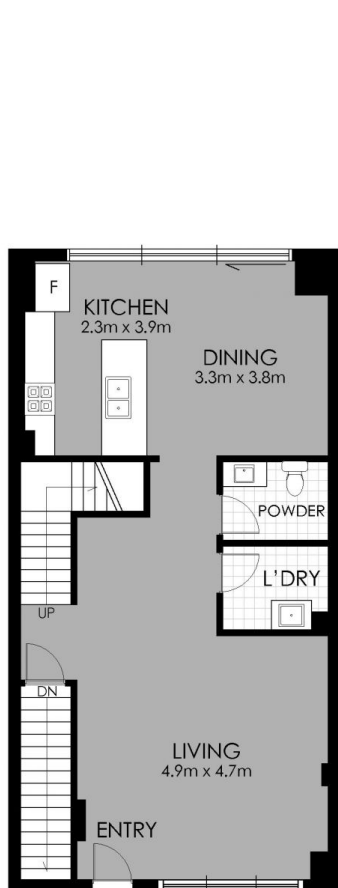
Building Size : 288 sqm

View

: <https://www.strathfieldpartners.com.au/lease/nsw/inner-west/homebush-west/residential/townhouse/7988607>



Ada Liu
02 9763 2277



33/81-86 Courallie Avenue, Homebush West



WARNING: DISCLAIMER This information is not to be relied upon. It is strictly used for marketing and illustration purposes only. All measurements are approximate. Not to scale. No liability accepted. You must rely on your own inquiries and seek advice from your solicitor.