



STRATHFIELD PARTNERS
REAL ESTATE AGENTS



15/68-70 Meehan Street Granville NSW

2 2 2

Tucked away on the top floor at the rear of a solid double-brick complex, this light-filled unit has been thoughtfully updated to blend comfort with convenience. Situated on the border of Parramatta and Granville, it's just a short walk to Parramatta CBD, Westfield, Harris Park station, local shops, and quality schools.

Type : Apartment

Price : \$ 485,000

View : <https://www.strathfieldpartners.com.au/sale/nsw/parramatta/granville/residential/apartment/8470483>

Key Features:

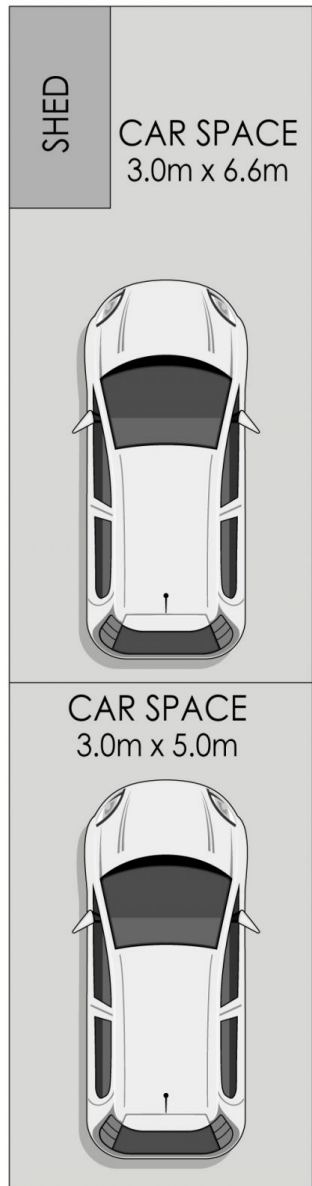
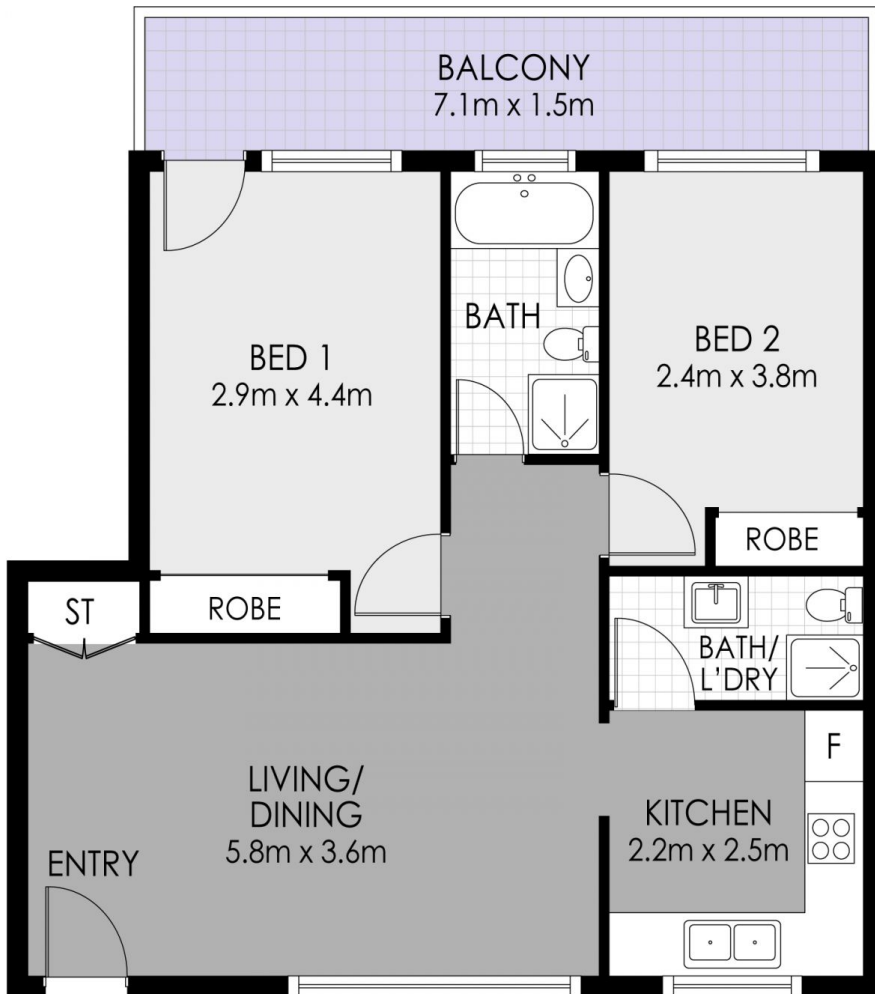
- * Two spacious bedrooms with built-in wardrobes, both opening directly to the balcony
- * Updated kitchen with timber-style benchtops, farmhouse sink, brand-new cooktop and oven, and ample storage
- * Open-plan living and dining with great natural light
- * Newly installed flooring throughout for a fresh modern feel



Didem Polat
02 9763 2277

[For full version visit the website](https://www.strathfieldpartners.com.au)

<https://www.strathfieldpartners.com.au>



15/68-70 Meehan St, Granville



WARNING: DISCLAIMER This information is not to be relied upon. It is strictly used for marketing and illustration purposes only. All measurements are approximate. Not to scale. No liability accepted. You must rely on your own inquiries and seek advice from your solicitor.